

the

serving residents of the Fisher Park Neighborhood

Fisher Parker

MAY 2005

2ND ANNUAL NEIGHBORHOOD YARD SALE

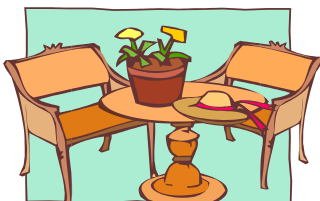
On Saturday, May 21, 7 a.m.–1 p.m., all neighbors are invited to participate in a neighborhood-wide yard sale, without even leaving home. The Fisher Park Neighborhood Association will place a newspaper ad the week before the sale, announcing that yard sales will be held throughout our neighborhood. Specific addresses will not be listed, so you may want to put a sign in your yard.

Then, please **give a tax-deductible donation** from your proceeds (10 % suggested) to the Fisher Park Neighborhood Association, P.O. Box 2043, Greensboro, NC 27402, or drop off your donation to a Board member. Get rid of all that clutter, recycle, make a little money, meet some neighbors, and support our wonderful neighborhood. Please contact Blair or Rachel Percival at 273-3365 or purplepercival@yahoo.com if you are interested in participating. Please let us know your name, home address, email address, and phone number. Successful selling/swapping to all! (**No rain date.**)

“WELCOME SUMMER” WITH A GARDEN PARTY

To welcome summer’s arrival, neighborhood adults are invited to a social in the garden of our Social Committee Chairperson, Michael Byrd, 805 Simpson Street, Saturday June 18, at 6:00 p.m. Please bring your favorite cocktail/drink and favorite hors

d’oeuvre to share. Casual attire. In case of rain, the party moves inside, and Michael trusts there’s room for us all. Please join neighbors in welcoming the summer season. RSVP to Michael Byrd, 274-8361.



GREEN HILL CEMETERY’S “PLANTS AND PLANTED” SPRING TOUR

You might also enjoy a springtime tour of Green Hill Cemetery, which forms the quiet western boundary of our neighborhood on May 15. During a 1½-hour walking tour, we highlight interesting plants and personalities settled to rest in Greensboro’s oldest city-owned cemetery. Wear comfy shoes. \$5/person. (*continued*)

CALENDAR OF EVENTS

MAY 2005 FPNA BOARD MEETING

Monday, May 23, 2005, 6:00 p.m.

Guest speaker Corporal Greg Gardner of the Police Department will discuss recent aggressive panhandling in our neighborhood.

GREEN HILL CEMETERY TOUR

Sunday, May 15, 2:00–3:30 p.m.,

Weather permitting. \$5/person

NEIGHBORHOOD YARD SALE

Saturday, May 21 7:00 a.m. – 1:00 p.m.

PARK WORK DAY

Saturday, May 28, 10:00 a.m. – Noon.

Meet in East Fisher Park

MAILBOX CONTEST

Submit entries by June 1.

WELCOME SUMMER GARDEN PARTY

*Saturday, June 18, 6:00 p.m.

* Note this new date!

NATIONAL NIGHT OUT AGAINST CRIME ICE CREAM SOCIAL

Tuesday August 2, 7:00 p.m.

HALLOWEEN PARTY/PARADE

Saturday, October 29, TBD

GREEN HILL CEMETERY TOUR

Sunday, October 30, 2:00-3:30 p.m.

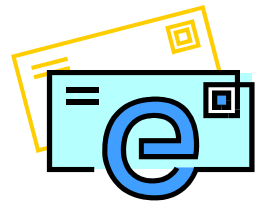
Meet at the southern-most entrance (near the corner of Fisher Avenue and Wharton Street). Tour cancelled in case of rain. All proceeds go to the City Cemetery fund. Contact Ann Stringfield, 370-0457.

PROPOSED CITY NOISE ORDINANCE

Fisher Park neighbors initiated discussions toward a proposed new Noise Ordinance for Greensboro. Participants most involved include representatives from downtown organizations, non-profit organizations, and city neighborhoods near and far. A copy of the proposed Noise Ordinance draft has been shared on the neighborhood e-mail list. For details on progress, contact our neighborhood's President-Elect David Shub, 274-0363.

FISHER PARK E-MAIL GROUP/LISTSERV

Neighbors who've joined our free e-mail group share up-to-the-minute information about lost/found pets, pass-along plants, events, and local concerns. If you haven't yet joined the e-mail group, visit <http://groups.yahoo.com/group/fisherpark/> then click on Join This Group. If your neighbor doesn't have e-mail, please print and share relevant news with them.



YOUNG FISHER PARKERS

Fisher Park young children and their parents continue to meet on good-weather Wednesdays at 4:00 p.m. at our neighborhood playground in East Fisher Park. In this age when children are driven to so many events, these informal Wednesday afternoon playgroups provide opportunities for neighborhood children to play together and form neighborhood relationships. Questions? Contact Allison Manning, 275-8833.

EUGENE STREET TRAFFIC

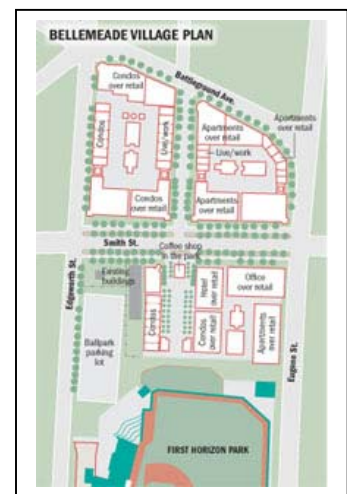
North Eugene Street residents initiated several neighbor-to-neighbor meetings to discuss traffic issues after mid-road reflective cross-walk signs appeared, unsolicited, along North Eugene. Discussions continue about the appearance of these signs and their effectiveness. Thanks to these discussions, the Greensboro Department of Transportation (GDOT) agrees to install directional signs encouraging Wendover traffic to approach/exit downtown via wider non-residential roads. Although unlikely to change regular commuter patterns, GDOT staff continue to hear our questions/suggestions as we evaluate these and other traffic calming/dissuasive measures.

BELLEMEADE NEIGHBORHOOD PROJECT

Fisher Park Board members attended a preview of the proposed Bellemeade Neighborhood project, a proposed multi-use (retail and residential) development on land owned by the Jones family, former owners of the North State Chevrolet dealership. Having sold the Chevy dealership, the Jones family intends to retain their property for high-density retail and residential development.

Their plans require underground parking, with retail at ground level, topped off by apartments and condos for three to five stories above the retail level. Exact height depends on the topography because the property exhibits a significant east to west downhill slope. City approval of Amendment One funds would be necessary to finance underground parking, and underground parking is imperative for the anticipated housing/retail density.

First phase development could begin in 2005/2006, with first floor retail shops below about 150 apartments on the upper/eastern lot where the former Chevy sales building currently stands. *Second phase* development on the slightly lower/western section of the former car lot and could host additional retail and approximately 100 condos upstairs. On the lowest/southwest corner, the Joneses



Bellemeade Village – Conceptual Drawing only.

hope to recruit a cornerstone store, perhaps a grocery, long desired by downtown neighbors. A *third phase* could bring additional mixed-use and perhaps a hotel on the former Chevy repair/service lot across Smith street.

Bellemeade Neighborhood development would create new environs on the former North State Chevy property along our neighborhood's southwest interface with downtown. (Unfortunately, many fine old homes along Spring and Cedar streets are being demolished by other downtown developers.) Much of the proposed design encourages pedestrian traffic, increased landscaping, and perhaps returning Smith Street to two-way traffic.

The Joneses have solicited downtown neighborhood responses to their plans, indicating an appreciation for Fisher Park's homeowner investments, which will contribute significantly to the value of the Bellemeade Neighborhood redevelopment goals. Comments we've heard are cautiously optimistic. Fisher Park neighbors consistently have supported a mix of residential plus retail use throughout downtown redevelopment discussions. To learn more about Bellemeade Neighborhood plans, contact Downtown Greensboro, Inc. at 379-0060.

GOOD CAKES MAKE GOOD NEIGHBORS . . . AND VICE VERSA

A great mix of downtown neighbors have strengthened acquaintances through mutual concerns in recent years, and in the mixing shared many parties, many recipes, and many a pound in the process. The pounds are well worth it when Fisher Park neighbor Prudy Strong arrives with a Black Walnut Chocolate Pound Cake from the *Fearrington House Cookbook* by Jenny Fitch. (We received approval to print the recipe by mentioning the cookbook is available for purchase at McIntyre's Bookstore in Fearrington Village. Visit www.fearrington.com.)

<p style="text-align: center;"><i>Black Walnut Chocolate Pound Cake</i></p> <p><i>Ingredients:</i></p> <p>1 cup butter (2 sticks) + ½ cup shortening 3 cups sugar 5 eggs 1 Tbsp. rum ½ tsp. vanilla 2¾ cups flour ¾ cup cocoa ½ tsp. baking powder ¼ tsp. salt 1 cup milk 1 ½ cups chopped black walnuts (Prudy prefers regular walnuts)</p> <p><i>Yields 1 tube cake of approx. 20 portions and innumerable voracious fans!</i></p>	<p><i>Directions:</i></p> <ol style="list-style-type: none"> 1. Preheat oven to 325° F. Cream butter and shortening w/ sugar until light and fluffy. 2. Add eggs one at a time, and beat after every egg is added. 3. Remove 2 tbs. flour from the measured amount of flour before sifting, and toss chopped walnuts into the 2 tbs. flour. 4. Sift the remaining flour, cocoa, baking powder, and salt together. Add to the egg mixture alternately with the milk, beginning and ending with the dry ingredients. Fold in the flour-coated chopped walnuts. 5. Grease a 9-inch tube cake pan and line the bottom of the pan with greased and floured wax paper. Pour the batter into the pan and bake at 325° F for 1¼ hour or until a toothpick inserted in the middle of the cake comes out clean. (Prudy cautions that she often bakes it longer.) 6. Cool the cake in the pan before removing.
--	---

FIRST HORIZON STADIUM TOUR FOR FISHER PARK NEIGHBORHOOD

On **Thursday, June 2 at 5:30 p.m.** residents and property owners of Fisher Park are invited to a free tour of First Horizon stadium. Refreshments will be provided along with an opportunity to ask questions of two stadium/team owners. RSVP to Judy Morton, Action Greensboro, 379-0821.

FROM OUR NEIGHBORHOOD GREETERS ...

Have you moved into the neighborhood recently? Have you been greeted? If not, please contact our two volunteer Neighborhood Greeters. They visit and deliver information about our neighborhood and the Historic District within.

But they don't know who's new until you or your neighbors call. If you live on the *west* side of Elm Street contact neighborhood Greeter Rachel Cannon-Percival at 273-3365 or purplepercival@yahoo.com. If you live on the *east* side of Elm Street contact Greeter Melissa Oulette at 273-2036 or moulette@triad.rr.com. Thanks for helping our greeters welcome all newcomers into the neighborhood.

MAILBOX REGULATIONS

We are reminded that U.S. Postal Service regulations prohibit placing/attaching **anything without postage paid** (including neighborhood newsletters) in/on your mailbox. So be aware that Block Captains can't use your mailbox without risking significant fines for the neighborhood.



MAILBOX CONTEST

Speaking of mailboxes, when delivering newsletters/flyers, we've observed some mighty funky mailboxes in the neighborhood. To celebrate them, your editors initiate a **Fisher Park residential mailbox contest!** We'll award admittedly small but equally funky prizes for (1) the most whimsical mailbox, (2) the most attractive non-traditional mailbox and, what the heck, (3) our postman's very favorite mailbox. Submit mailbox digital photos by June 1 to infocrofters@triad.rr.com. An undeniably-biased committee will award modest prizes during our neighborhood's Welcome Summer Party (June 18) and guarantee fleeting fame with your mailbox photo in the next Fisher Parker. (Oh yes, for U.S. Postal Service mailbox standards, visit www.usps.com, and search for "Mailbox.")

FROM THE PARK COMMITTEE

Wow! This 1917 photo of West Fisher Park, projects east toward today's Fisher Park Circle/Carolina St. intersection. It is from a book titled, *The photography of John Walker Fry: the immediate world and distant vistas of a*

Victorian gentleman / with explanatory text and including an intimate history of Greensboro by his granddaughter Mary Lewis Rucker Edmunds. By John Walker Fry. Greensboro, N.C.: Greensboro Preservation Society, c. 1982 (Winston-Salem, N.C.: Hunter Publishing Co.)



The Park Committee has been doing some serious research into the origins and early appearance of Fisher Park. Through several generous interviews with early Fisher Park residents – including Dick Douglas, Jr. – charming details surface such as reports of a large wooden bandstand “summer house” near Elm Street and Fisher Park Circle, wooden bridges of rustic branch styling, and descriptions of a shallow wading pool with a fountain near Elm Street and North Park Drive. If you know early Fisher Park residents we can interview, please call Carl Myatt at 272-0999.

Thus enthused, our Park Committee has initiated many meetings, park walks, and discussions with City Parks and Recreation Dept. staff. Below, our Park Committee highlights primary goals for 2005. Carl solicits your questions, suggestions, and participation to bring these goals to fruition.

- **2005 Park Goals** (1) Evaluate existing conditions of the park and generate a Corrective Plan of Action; (2) restore deteriorated paths; (3) generate an updated Park Master Plan; (4) determine resources for public and private funding, and review multiple park uses; and (5) provide dog waste pick-up bags and enforce leash laws.

The Park Committee recognizes the 2003/2004 Fisher Park Next Generation neighborhood survey report, and most goals for the park derive directly from that plan.

- **Park Work Day, Saturday morning, May 28, 10:00 a.m.–Noon.** Meet at the picnic table in East Fisher Park nearest North Elm Street and North Park Drive. Bring small hand-cutting tools and plenty of energy! Contact Carl Myatt (272-0999) for details.
- **Walk the Park** – The Park Committee participated in two informative walks through Fisher Park in April, along with Melissa Begley, the city’s Urban Forester, and Bobby Coltrane of the City Parks & Recreation maintenance staff. Dead trees and overhanging dead branches were marked for removal. Areas of concern and City participation in park maintenance were reviewed.
- **Renovate Park Trails** – The Park Committee identified a material, better and easier to install than asphalt, that may be used to restore the park trails. PolyPavement is sprayed or mixed with soil and becomes a hard walking surface. City Parks & Recreation has ordered a 5-gallon supply with which to experiment. As a temporary measure, the city has agreed to provide a fine gravel material on park trails that have washed out or have been uprooted.
- **Dog Poop Bag Containers** – The Park Committee has ordered four dog poop bag dispensers, two for each side of the park. When walking your dog there, please take a bag from the dispenser, gather the dog’s waste, and deposit it in any of our many new garbage containers. And remember . . . always leash your dogs while on public property!
- **Branch and Brush Pick-up Areas** – As you walk the park and notice dead limbs, sticks, or vines, please gather and take them to the curb (not in the street). The City will pick them up at curbside.

COA BEFORE EXTERIOR RENOVATIONS/LANDSCAPING

As we spring into home repairs, remember that neighbors who live within the Fisher Park **Historic District** must obtain permission for most exterior and significant landscape alterations before proceeding. Fortunately, it’s easy to do so, starting with a call to the City Historic District staff at 336-373-2349 or www.ci.greensboro.nc.us/hcd. (Also, the historic district boundaries of Fisher Park and COA information are available at <http://www.fisherparknc.org/>.) It is eminently easier to get a Certificate of Appropriateness (permission) first rather than risk undoing/redoin an exterior/landscaping job after the fact. Our neighborhood website also reviews the basic Certificate of Appropriateness (CoA) process and provides links to the Historic District Guidelines & Design Manual. Any neighbor can attend monthly meetings of a Design Review Committee of volunteers offering free exterior design advice based on the local Historic District Guidelines Design Manual.

NEW HOUSING IN THE NEIGHBORHOOD

In addition to the 15 Magnolia Place condos/town homes under construction on the former Fisher Park Academy lots on Elm Street, property developer Dawn Cheney is refurbishing historic brick apartments near the Murrow Blvd. bridge on the southeast corner of our neighborhood. Her request to rezone these multi-family apartments to six condos is supported by the neighborhood Board, which expressed congratulations to Dawn on her historically sensitive rehabilitation of this building, originally constructed as apartments for executives of the Vicks Chemical Company in 1918.



COM·MUN’·NI·CA’·TIVE (ADJ.) – INCLINED TO COMMUNICATE

If you enjoy writing, proof-reading, graphic design, or editing, please offer your services to the neighborhood. We’re always looking for responsible folks who will commit the significant time required to produce this newsletter or update our web site. Contact Ann or Liz (see page 6 for contact information.)

Fisher Park Neighborhood Association P. O. Box 2043, Greensboro, NC 27401-1612 CONTACTS – 2005			
Board of Directors			
Position	Name	Phone	E-mail
President (2005)	Allison Manning	275-8833	abdmanning@yahoo.com
President-Elect (2006)	David Shub	274-0363	shub99@yahoo.com
Secretary (2006)	Roger Seel	275-3470	rseel@triad.rr.com
Treasurer (2006)	Blair Barton-Percival	273-3365	bfb4@cornell.edu
Past President ExOfficio	Russ Clegg	574-1879	russang@aol.com
Board (2007)	Erick Adamson	272-9515	eadamson.mail@earthlink.net
Board (2005)	Michael Byrd	274-8361	michaellbyrd1@aol.com
Board (2005)	Robert Carter	378-1974	abandrob@triad.rr.com
Board (2005)	Carla Copeland-Burns	274-4095	carlacopelandburns@hotmail.com
Board (2005)	Nina Dabbs	230-0422	nsdabbs@aol.com
Board (2007)	Jim Jeffries	691-8981	jimjeffries@mvlaw.com
Board (2006)	Todd McCain	333-2299	stmccain@aol.com
Board (2007)	Cheryl Poole	275-0333	cherylpoole@triad.rr.com
Board (2007)	Carol Stoneburner	379-9193	no e-mail address
Board (2007)	Ann Stringfield	370-0457	infocrofters@triad.rr.com
Board (2005)	George Weldon	379-0902	george_weldon@vfc.com
Other Contacts			
Newsletter	Ann Stringfield	370-0457	infocrofters@triad.rr.com
	Liz Urquhart	373-1250	liz.urquhart@ugcorp.com
Webmaster	Ann Stringfield	370-0457	infocrofters@triad.rr.com
Park Committee	Carl Myatt	272-0999	cmmyatt3363@aol.com
West Side Greeter	Rachel Cannon-Percival	273-3365	purplepercival@yahoo.com
East Side Greeter	Melissa Ouellette	273-2036	mouellette@triad.rr.com
Neighborhood Watch	Natalie Koeplinger	378-0108	n/a
Young Fisher Park Playgroup	Allison Manning	275-8833	abdmanning@yahoo.com
Social Committee	Michael Byrd	274-8361	michaellbyrd1@aol.com
City Council Representative	Claudette Burroughs-White	379-0050	burroughswhite@prodigy.net
County Commissioner Rep.	Kay Cashion	274-6272	kcashion@co.guilford.nc.us
Schedule	<p>Monthly neighborhood association meetings are held 6:00 p.m. the Monday before the final Wednesday of each month. Call Allison Manning, President, to confirm dates. Board meetings are open to all residents; currently set for May 23, June 27, July 25, August 29, September 26, October 24, and November 28. (December meeting is typically not set this early in the year.) May 23 meeting will feature guest speaker Corporal Greg Gardner of the Police Dept. to discuss recent aggressive panhandling in our neighborhood.</p>		

City of Greensboro and Other Contacts		
Department/Company	Purpose	Phone
City of Greensboro City Customer Contact Ctr.	Directs citizen calls to appropriate City departments.	373-2723
City Historic District Staff	Historic district guidelines, application for certificate of appropriateness, free advice.	373-2349
Zoning Enforcement	Parking in front yards, historic district guidelines enforcement	373-2630
Ordinance Enforcement	Housing inspections, abandoned vehicles, lot cleanup.	373-2111
Duke Power	Streetlight outage.	378-9451
Police Central Division	Help for emergencies and non-emergencies/ enforcement.	Emergency: 911 Non-Emergency: 373-2222
Police Central Division– Community Resource Officer	Corporal Greg Gardner	373-2486 Greg.gardner@ greensboro-nc.gov
Fisher Park ListServ	Subscribe: http://groups.yahoo.com/group/fisherpark/	Submit e-mail: fisherpark@ yahogroups.com